


Music Theory

Notes: Written signs, representing **pitch** and **duration** of a musical sound.

Names of Notes: Notes are named after the 1st 7 English alphabets i.e. **A, B, C, D, E, F, G.**

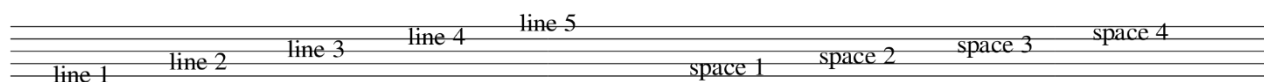
Types of Notes:

SEMI BREVE		WHOLE NOTE - 1	
MINIMS		HALF NOTES - 1/2	
CROTCHET		QUARTER NOTES - 1/4	
QUAVER		8th NOTES - 1/8	
SEMI QUAVERS		16th NOTES - 1/16	

Parts of Note:



Staff / Stave: The system of parallel lines on and between which notes are written.



Barline: - Vertical lines, divides Music into Measures/Bars.



Measure / Bar: - From one Barline to the next.



Clefs: Determines the pitch of one line and thus the pitch of each note written on the staff.

Treble Clef / 'G' Clef



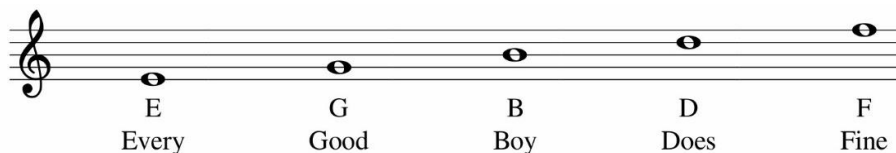
Treble means higher

Bass Clef / 'F' Clef



Bass means lower

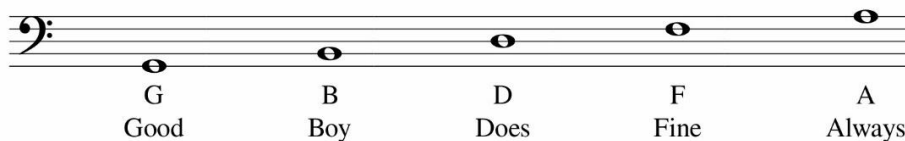
Notes on the **lines** – Treble Clef / G Clef



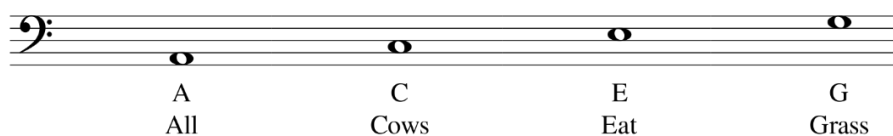
Notes on the **spaces** – Treble Clef / G Clef



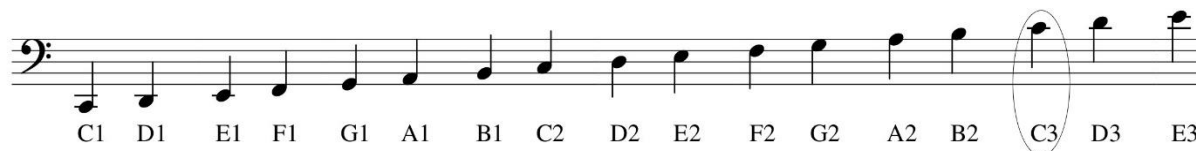
Notes on the **lines** – Bass Clef / F Clef



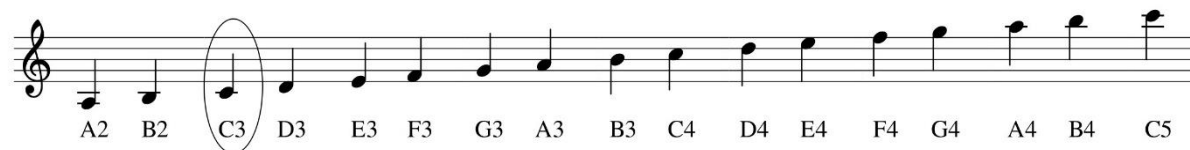
Notes on the **spaces** – Bass Clef / F Clef



Notes on **F Clef/Bass Clef**



Notes on **G Clef/Treble Clef**



Time Signature: - Two numbers one below the other.

Upper Number: - No. of Beats/Counts in a Measure

Lower Number: - The type of note which receives 1 beat/count.



4 crotchet beats in a bar



3 crotchet beats in a bar



2 crotchet beats in a bar



Common Time:- same as



1. Let's Start



2. Do Better



REST

In Music, **Rest** means **Silence**



Semi Breve Rest or
Whole bar rest



Minim Rest



Crotchet Rest

3. Mary Had a Little Lamb



4. A to E

Dotted Minim - $\text{♩.} = \text{♩} + \text{♩} = 3 \text{ counts}$

A Dot placed after a note adds to that note one half of its value.

5. Three Beats

6. Four Goals

7. Yankee Doodle



8. Volga Boat

Musical score for 'Volga Boat' in 4/4 time. The piece consists of eight measures. The right hand (treble clef) plays a melody of quarter notes: G4, A4, B4, C5, B4, A4, G4, F4. The left hand (bass clef) plays a bass line of quarter notes: G2, F2, E2, D2, C2, B1, A1, G1.

9. Two-Four

Musical score for 'Two-Four' in 2/4 time. The piece consists of eight measures. The right hand (treble clef) plays a melody of quarter notes: G4, A4, B4, C5, B4, A4, G4, F4. The left hand (bass clef) plays a bass line of quarter notes: G2, F2, E2, D2, C2, B1, A1, G1.

10. Old MacDonald

Musical score for 'Old MacDonald' in 4/4 time. The piece consists of ten measures. The right hand (treble clef) plays a melody of quarter notes: G4, A4, B4, C5, B4, A4, G4, F4, E4, D4. The left hand (bass clef) plays a bass line of quarter notes: G2, F2, E2, D2, C2, B1, A1, G1, F1, E1.

11

Musical score for 'Old MacDonald' continuation in 4/4 time. The piece consists of six measures. The right hand (treble clef) plays a melody of quarter notes: G4, A4, B4, C5, B4, A4, G4, F4, E4, D4. The left hand (bass clef) plays a bass line of quarter notes: G2, F2, E2, D2, C2, B1, A1, G1, F1, E1.

11. Feels Good





12. Carry Me Back



13. Jingle Bells



Dashing

A piano exercise in 4/4 time. The right hand plays a melody of eighth notes, starting with a quarter rest in the first measure. The left hand plays a bass line of quarter notes and rests.

9

Jingle

A piano exercise in 4/4 time. The right hand plays a melody of eighth notes. The left hand plays a bass line of quarter notes and rests.

17

Jingle

A piano exercise in 4/4 time. The right hand plays a melody of eighth notes. The left hand plays a bass line of quarter notes and rests.

14. Always Happy

A piano exercise in 4/4 time. The right hand plays a melody of eighth notes. The left hand plays a bass line of quarter notes and rests.

15. Eighth Note

A piano exercise in 2/4 time. The right hand plays eighth notes with fingerings: 1 & 2 &, 1 & 2&. The left hand plays eighth notes with fingerings: 1 & 2 &, 1&2&.



16. Twinkle Twinkle

Musical notation for the first three measures of 'Twinkle Twinkle' in 4/4 time. The treble clef contains a melody of eighth notes: C4, D4, E4, F4, G4, A4, B4, A4, G4, F4, E4, D4. The bass clef contains whole rests for all three measures.

Musical notation for measures 4-6 of 'Twinkle Twinkle' in 4/4 time. The treble clef contains a melody of eighth notes: C4, D4, E4, F4, G4, A4, B4, A4, G4, F4, E4, D4. The bass clef contains whole rests for all three measures. A small '4' is written above the first measure.

17. Are You Sleeping

Musical notation for 'Are You Sleeping' in 4/4 time. The treble clef contains a melody of quarter notes: C4, D4, E4, F4, G4, A4, B4, A4, G4, F4, E4, D4. The bass clef contains whole rests for the first five measures, followed by two measures of a bass line: G2, F2, E2, D2.

Incomplete Measure

There is only 1 beat in the 1st measure; the missing 2 beats will be found in the last measure. Start to count on beat 3.

18. Happy Birthday



3 &

♭ - Flat - play the next key to the LEFT

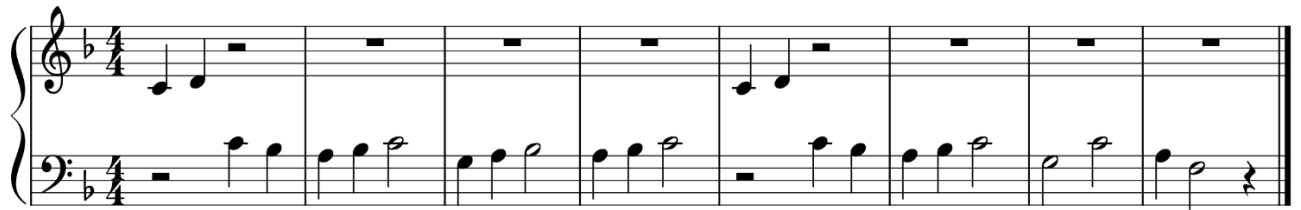
19. Flat Waltz

20. We Shall Overcome

5



21. London Bridge



Musical score for "London Bridge" in 4/4 time. The piece is in the key of B-flat major (one flat). The treble clef part consists of a simple melody with quarter and eighth notes. The bass clef part provides a steady accompaniment with quarter notes.

- Sharp - play the next key to the RIGHT

22. Too Sharp



Musical score for "Too Sharp" in 4/4 time. The piece is in the key of D major (one sharp). The treble clef part features a melody with quarter and eighth notes. The bass clef part has a simple accompaniment with quarter notes.

23. Slow Waltz



Musical score for "Slow Waltz" in 3/4 time. The piece is in the key of D major (one sharp). The treble clef part has a waltz-like melody with quarter and eighth notes. The bass clef part provides a simple accompaniment with quarter notes.

24. Be Brave



9

25. Lullaby

9

